

Customer :

customer

Customer part :

customer part

Comment :

Comment

S1=6.07

S2=5.89

Tmax=464

Tp S2=503.0

PI=0.51

HI=108

Sample =1767.80

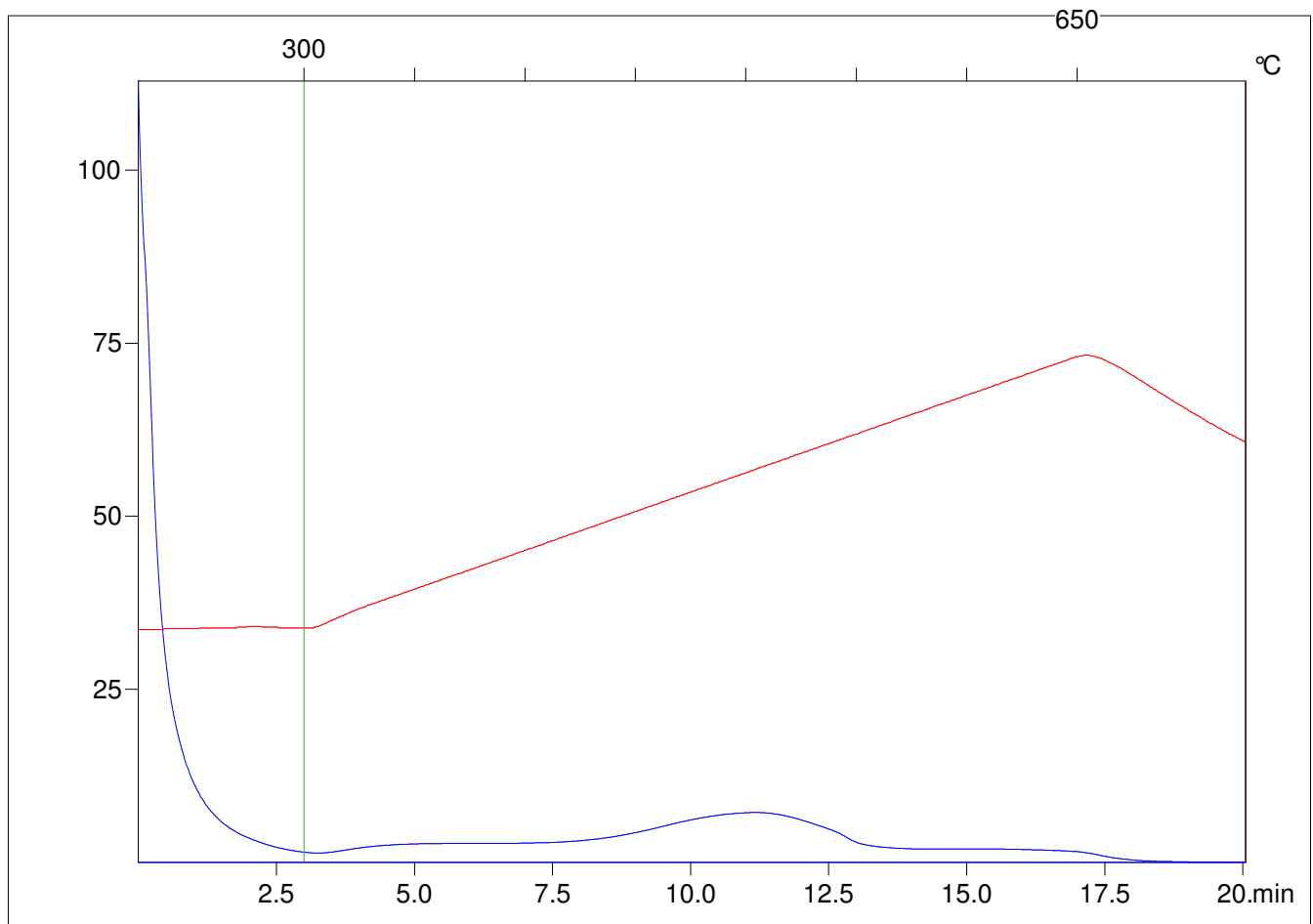
Method =Bulk Rock

Cycle=Basic

KFID(10\*9)=1444

Qty =71.0

TOC=5.45



C:\VINC\PK3\_1792\PK038.R00 : FID pyrolysis graphic

State

Pyro Status

Oxi Status